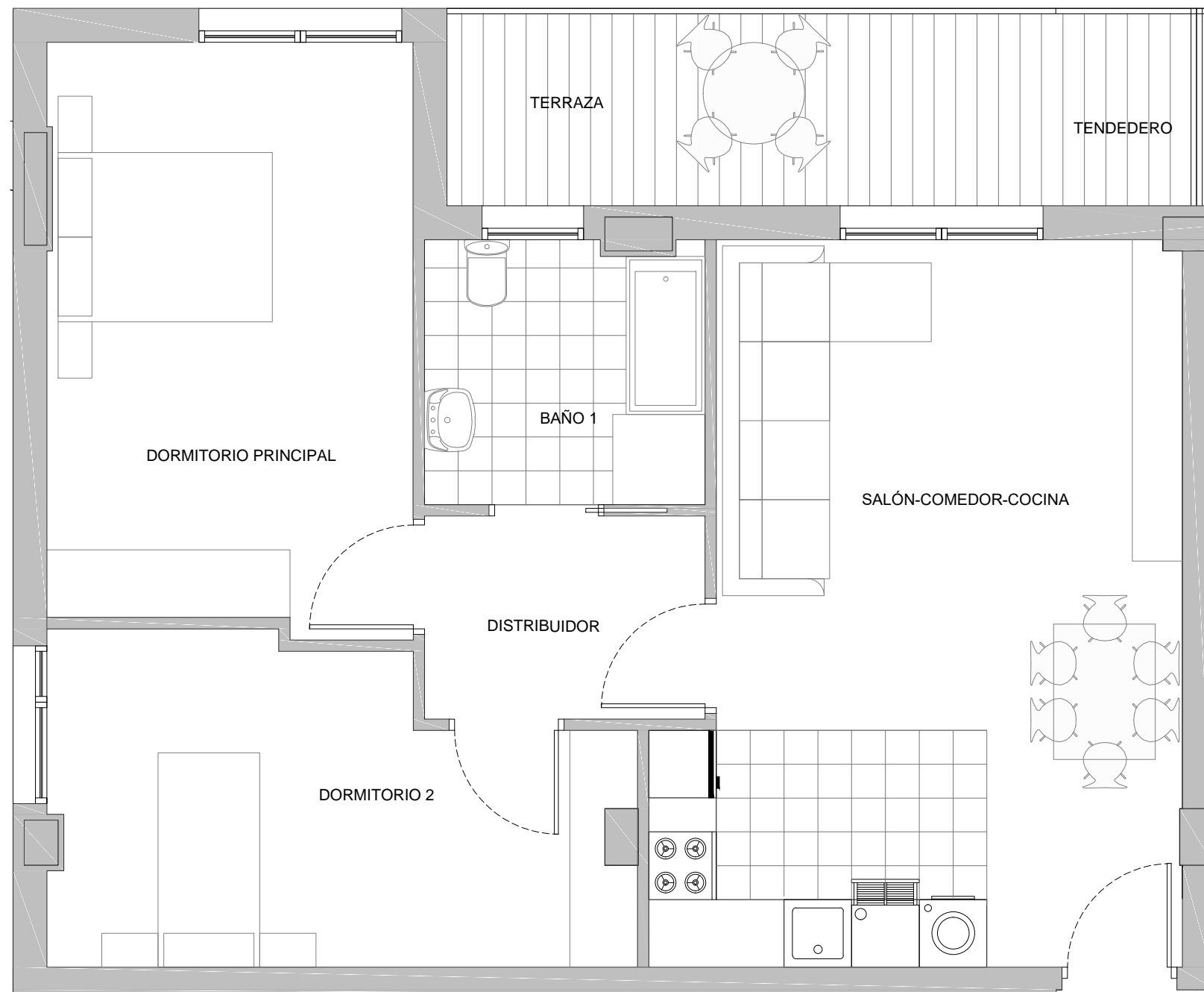
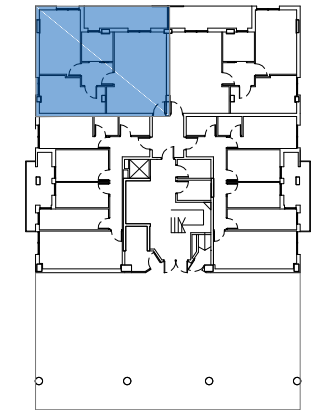


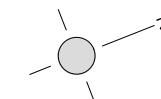
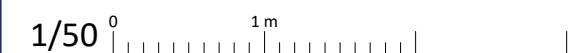
# JOLASTOKIETA

36 viviendas tasadas municipales



<b>SUPERFICIE INTERIOR</b>	<b>68,65 m<sup>2</sup></b>
SALÓN COMEDOR COCINA	27,93 m <sup>2</sup>
DORMITORIO PRINCIPAL	16,78 m <sup>2</sup>
DORMITORIO 2	13,61 m <sup>2</sup>
BAÑO 1	5,85 m <sup>2</sup>
DISTRIBUIDOR	4,48 m <sup>2</sup>
<b>SUPERFICIE EXTERIOR</b>	<b>11,20 m<sup>2</sup></b>
TERRAZA	9,70 m <sup>2</sup>
TENEDERO	1,50 m <sup>2</sup>

Superficies útiles aproximadas



Planta Baja  
Tipo B